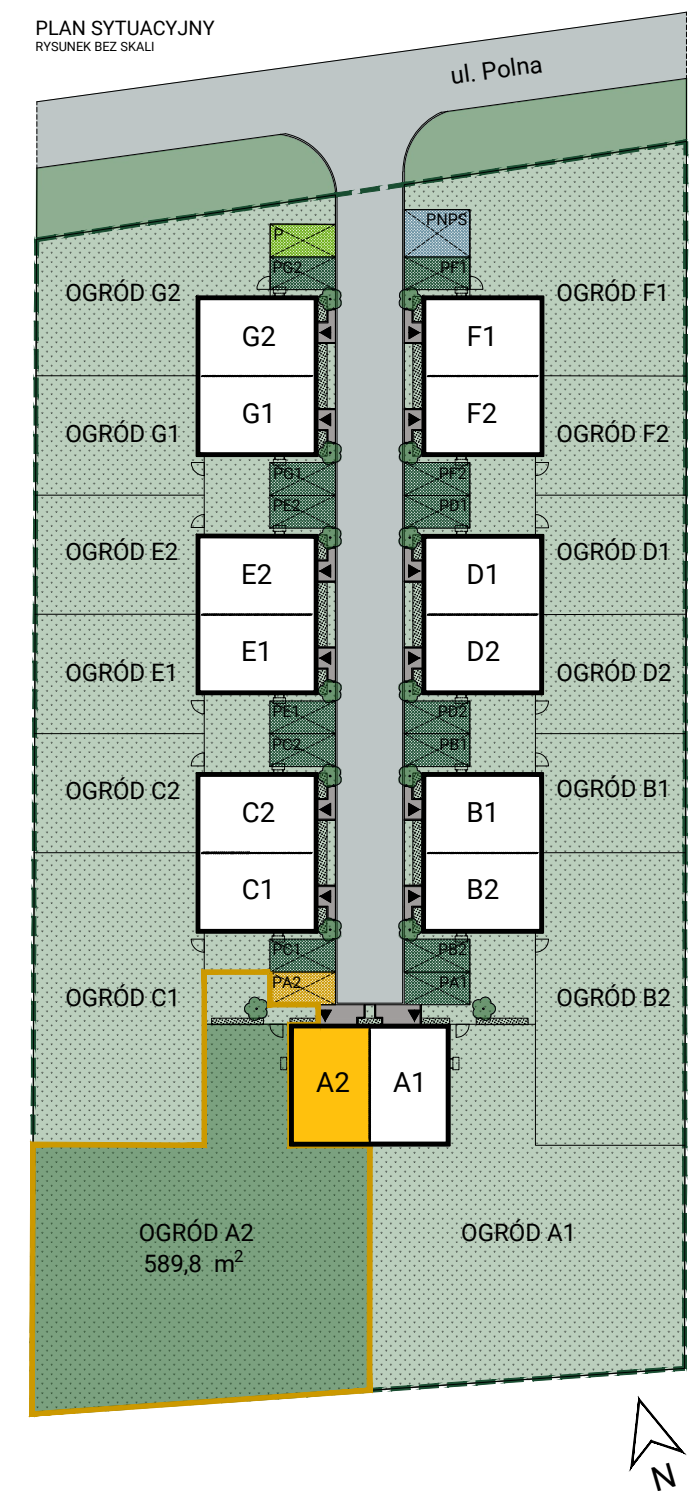
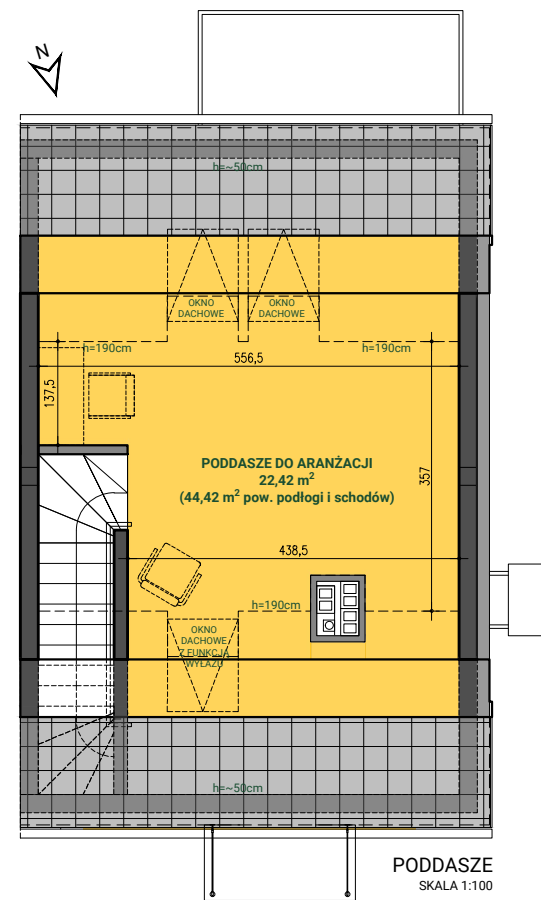
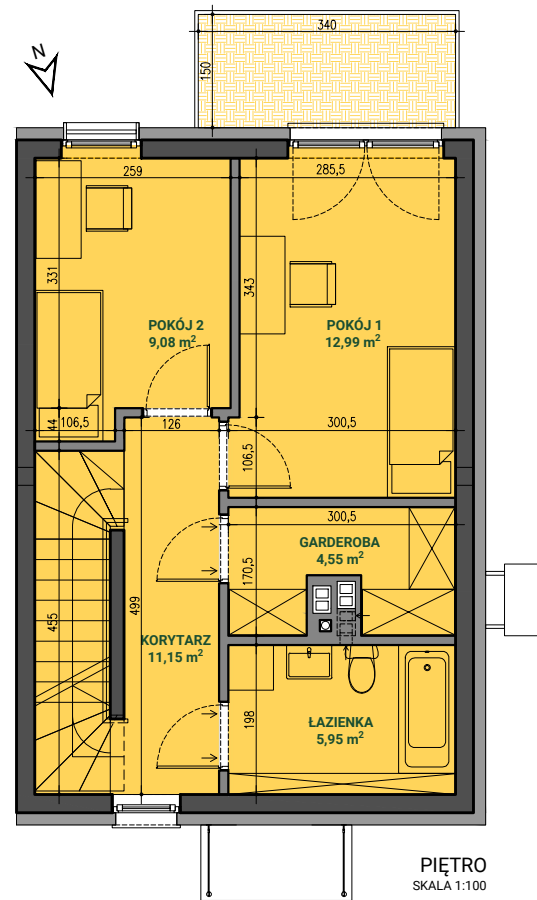
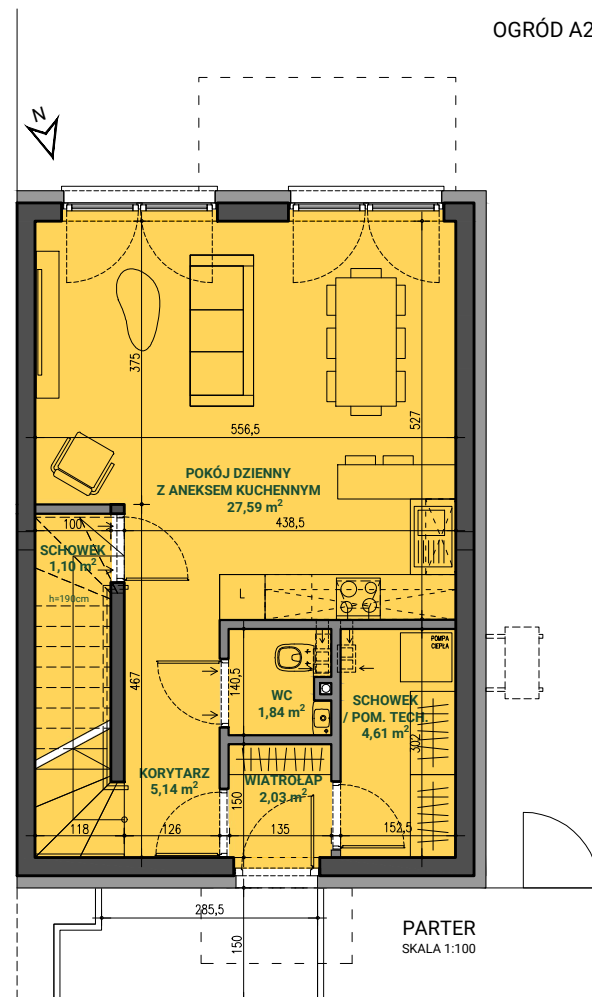
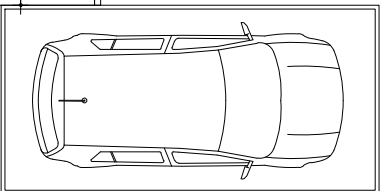


SUMA POWIERZCHNI LOKALU (MIERZONA PO PODŁODZE) = 130,45 m<sup>2</sup>  
 SUMA POWIERZCHNI UŻYTKOWEJ LOKALU = 108,45 m<sup>2</sup>  
 POWIERZCHNIA OGRODU = 589,80 m<sup>2</sup>



PARTER	
WIATROLAP	2.03 m <sup>2</sup>
SCHOWEK	4.61 m <sup>2</sup>
WC	1.84 m <sup>2</sup>
POKÓJ DZIENNY Z ANEKSEM KUCH.	27.59 m <sup>2</sup>
SCHOWEK	1.10 m <sup>2</sup>
KORYTARZ	5.14 m <sup>2</sup>
SUMA PARTER	42.31 m <sup>2</sup>



PIĘTRO	
KORYTARZ	11.15 m <sup>2</sup>
ŁAZIENKA	5.95 m <sup>2</sup>
GARDEROBA	4.55 m <sup>2</sup>
POKÓJ 1	12.99 m <sup>2</sup>
POKÓJ 2	9.08 m <sup>2</sup>
SUMA PIĘTRO	43.72 m <sup>2</sup>

PODDASZE	
PODDASZE	22.42 m <sup>2</sup>
SUMA PODDASZE	22.42 m <sup>2</sup>